

- P13 12 WAY PADDLE CONNECTOR
- P14 16 WAY PADDLE CONNECTOR
- S22 2X8 WAY TOP ENTRY SKT
- S23 2X8 WAY TOP ENTRY SKT
- #S24 2X2 WAY TOP ENTRY SKT

**T2010 POWER CONNECTOR**

WIRE LINK I/OPAD X S1

WIRE LINK RXD 11 S8

WIRE LINK TXD 10 S8

WIRE LINK +13V-ECON 5 S2

**T2010 CONTROL BOARD**

**NOT FITTED AS STANDARD**

**NOTES:**

1. DELETE ON T2000 CONTROL BOARD; 220-01377-03
  - 1.1 R535 2K7.
  - 1.2 R536 47K.
  - 1.3 R513 0X.
2. LINK AE064 INTERFACE TO T2000 CONTROL BOARD AS INDICATED.

#TA064	#R22	#LINK
NOT-FITTED	150KX	0X
FITTED	-	-

**SIGNAL NAMES AND WIRING FOR DISPATCHER III V.2**

S22	D-RANGE	SIGNAL NAME
1	2	AUDIO-ENABLE
3	1	PTT/BID-IN
5	3	N/C
7	4	ALARM-AUDIO
9	5	RX-DATA-IN
11	6	ALARM-HOLD
13	7	CNL-SEL-OUT
15	8	PTT-OUT
2	9	CNL-SEL-IN
4	10	GND
6	11	FOOTSWITCH
8	12	PSK-OUT
10	13	ALARM-SENSE
12	14	GND
14	15	+13V8SW
16	-	-

**SIGNAL NAMES AND WIRING FOR DISPATCHER III V.3**

S23	D-RANGE	SIGNAL NAME
1	1	RX-AUDIO
3	2	RSS-IN
5	3	METER-N/C
7	4	GND-N/C
9	5	RX-DISC-AUD
11	6	RADIO-PWR-ON
13	7	CH-OUT
15	8	PTT-OUT
2	9	CH-IN
4	10	ANALOG-GND
6	11	EXT-SPKR-N/C
8	12	TX-AUDIO
10	13	ALARM-SENSE
12	14	GND
14	15	+13V8
16	-	-

REV/ISS	AMENDMENTS	DRAWN	CHKD	D.O.	APVD	DATE
6A	ECO 770127. BOARD OUTLINE CHANGE	T.M.B	H.O.	M.HALL	P.J.	X
5A	ECO 770076. CIRCUIT MODS	S.D.K.	H.O.	M.HALL	I.MCKEE	13.08.98
4B	S24 NOW #S24 MECH PARTS ADDED	DOUGLAS	M.HALL	M.HALL	I.MCKEE	19.02.98
4A	CHANGED TECHNOLOGY OF PCB TO SMD	M.HALL	M.HALL	M.HALL	S.CRAGG	28/10/97
3A	ADDED MECHANICAL PARTS TO BOM.	M.HALL	M.HALL	M.HALL	S.CRAGG	13/12/95
2C	ADDED MECHANICAL PARTS TO BOM.	M.HALL	M.HALL	D.ELDER	S.CRAGG	09/03/93
2B	CHANGED VALUE OF C11	M.HALL	H.O.	D.ELDER	S.CRAGG	15/06/94
2A		M.HALL	H.O.	D.ELDER	S.CRAGG	03/12/92

© **TAIT ELECTRONICS**

**TA064-01**

**T2010 RAYWOOD INTERFACE**

IPN: 227-06401-06 ISSUE: A ID: 2.S.C. 1

PROJECT: TA064-01 DESIGNER: H.OVERTOOM FILE NAME: A006416A FILE DATE: 08-12-98 NO.SHEETS: 2

	A	B	C	D	E	F	G	H	J	K
9										
8										
7										
6										
5										
4										
3										
2										
1										
0										

QTY:	2.0	IPN:	240-04020-62	SHORTING LINK FOR 0.1" SPACED PINS (MECH PART)
QTY:	2.0	IPN:	316-80032-00	PACKAGE FOAM A4M2495 (MECH PART)
QTY:	1.0	IPN:	410-01072-00	CARTON ACCESSORY A2A678 204*136*60MM(MECH PART)
QTY:	1.0	IPN:	399-00010-88	BAG STATIC SHIELDING 152*254MM (MECH PART)
QTY:	1.0	IPN:	399-00010-51	BAG PLASTIC 75*100MM (MECH PART)
QTY:	1.0	IPN:	369-00010-14	CABLE TIE NYLON 100*2.6MM (MECH PART)
QTY:	1.0	IPN:	365-01482-00	LABEL BLANK 20X67MM BRIGHT ORANGE (MECH PART)
QTY:	1.0	IPN:	360-01053-01	PLUG A3M2563 PLASTIC DRANGE BLANKING(MECH PART)
QTY:	3.0	IPN:	349-00020-32	SCREW TAPTITE M3*8MM PAN POZI ST BZ (MECH PART)
QTY:	2.0	IPN:	340-00010-07	FUSE CLIP FOR 20*5MM FUSES (MECH PART ONLY)
QTY:	1.0	IPN:	240-02010-68	SOCKET DRANGE 15WAY FLAT CABLE (PURE MECH PART)
QTY:	2.0	IPN:	240-00020-54	PLUG 16 WAY 2X8 MICROMATCH (MECH PART)
QTY:	2.0	IPN:	240-00020-51	PLUG 12 WAY 2X6 MICROMATCH (PURE MECH PART)
QTY:	0.25	IPN:	205-00010-24	CABLE 15CORE FLAT ROUND UNSHIELDED (MECH PART)
QTY:	0.03	IPN:	205-00010-12	CABLE FLAT RIBBON 16 CORE GREY (MECH PART)
QTY:	0.15	IPN:	201-00030-06	WIRE #1 T/C WIRE 7/0.2MM PVC BLUE (MECH PART)
QTY:	0.15	IPN:	201-00030-06	WIRE #1 T/C WIRE 7/0.2MM PVC BLUE (MECH PART)
QTY:	0.15	IPN:	201-00030-05	WIRE #1 T/C WIRE 7/0.2MM PVC GREEN (MECH PART)
QTY:	0.05	IPN:	201-00030-02	WIRE #1 T/C WIRE 7/0.2MM PVC RED (MECH PART)
QTY:	1.0	IPN:	201-00030-07	WIRE #1 T/C WIRE 7/0.2MM PVC VIOLET (MECH PART)

© TAIT ELECTRONICS  
 TA064-01  
 T2010 RAYWOOD INTERFACE  
 IPN: 227-06401-06 ISSUE: A ID: 2.SC. 2  
 PROJECT: TA064-01 DESIGNER: H.OVERTOOM FILE NAME: A006416A FILE DATE: 08-12-98 NO.SHEETS: 2

6A	ECO 770127. BOARD OUTLINE CHANGE	T.M.B	H.O.	M.HALL	P.J.	X
REV/ISS	AMENDMENTS	DRAWN	CHKD	D.O.	APVD	DATE

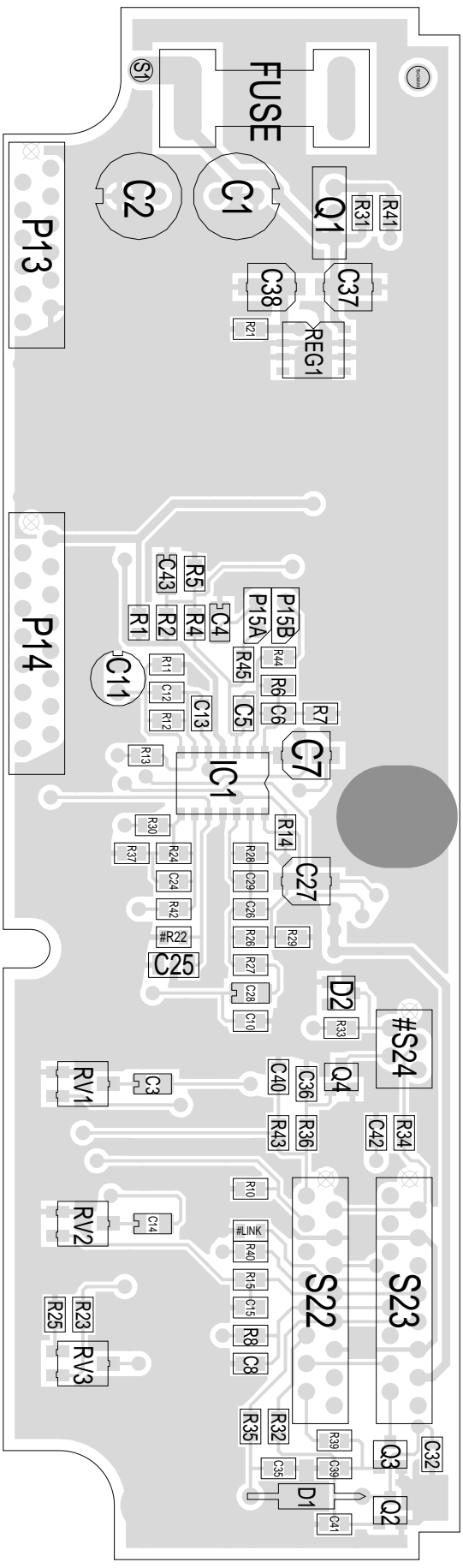
A B C D E F G H J K

1 A B C D E F G H J K L

2

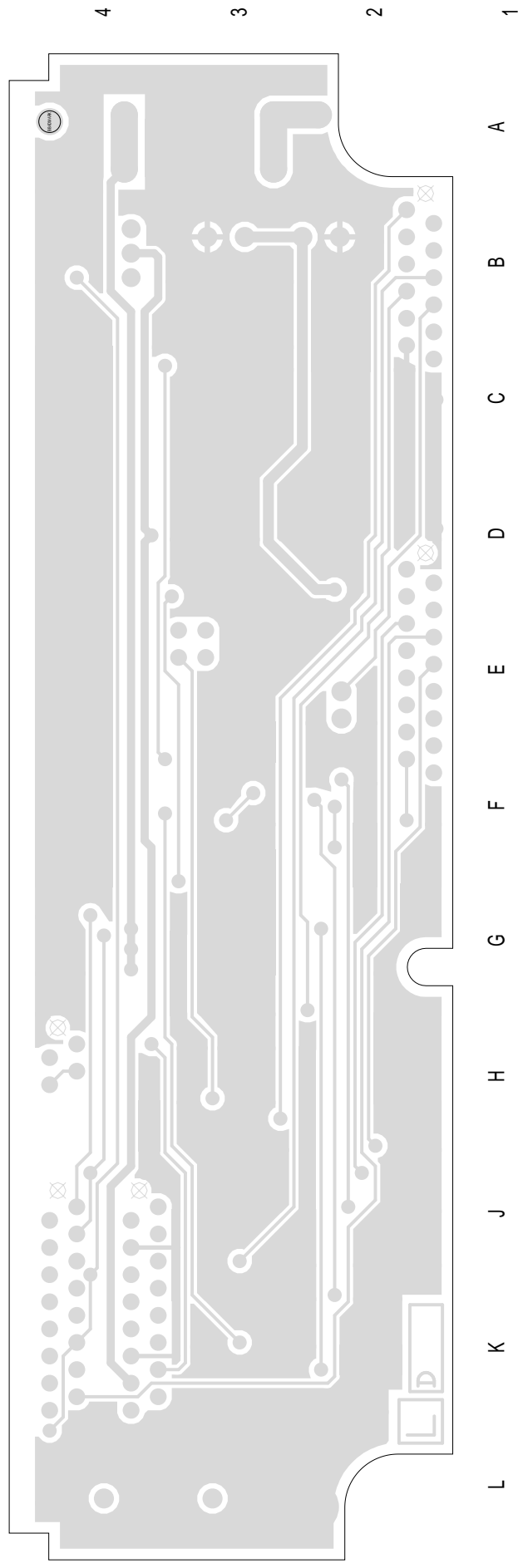
3

4



<b>TAIT ELECTRONICS</b>	IPN: 227-06401-06	ISS: A	ID: 1.TA	DATE: 14 Dec 1998
	<b>TA064-01 PCB LAYOUT - TOP SIDE</b>			

Scale: 1.7:1 ; Rotation: 0 degrees



<b>TAIT ELECTRONICS</b>	IPN:	ISS:	ID:	DATE:
	227-06401-06	A	2.BA	14 Dec 1998
<b>TA064-01 PCB LAYOUT - BOTTOM SIDE</b>				

Scale: 1.7:1 ; Rotation: 0 degrees